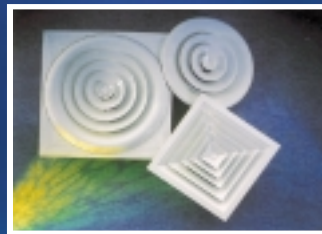
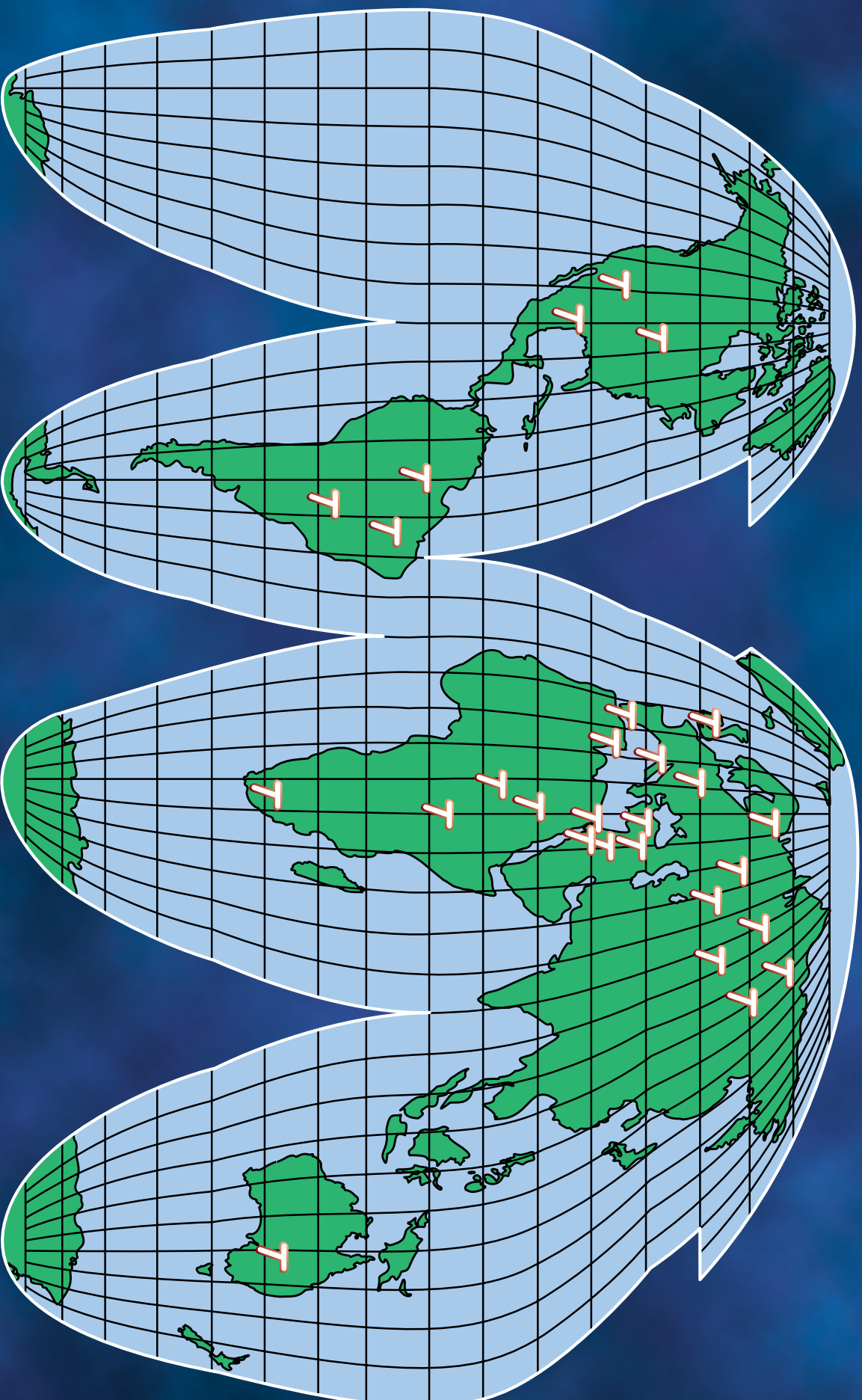
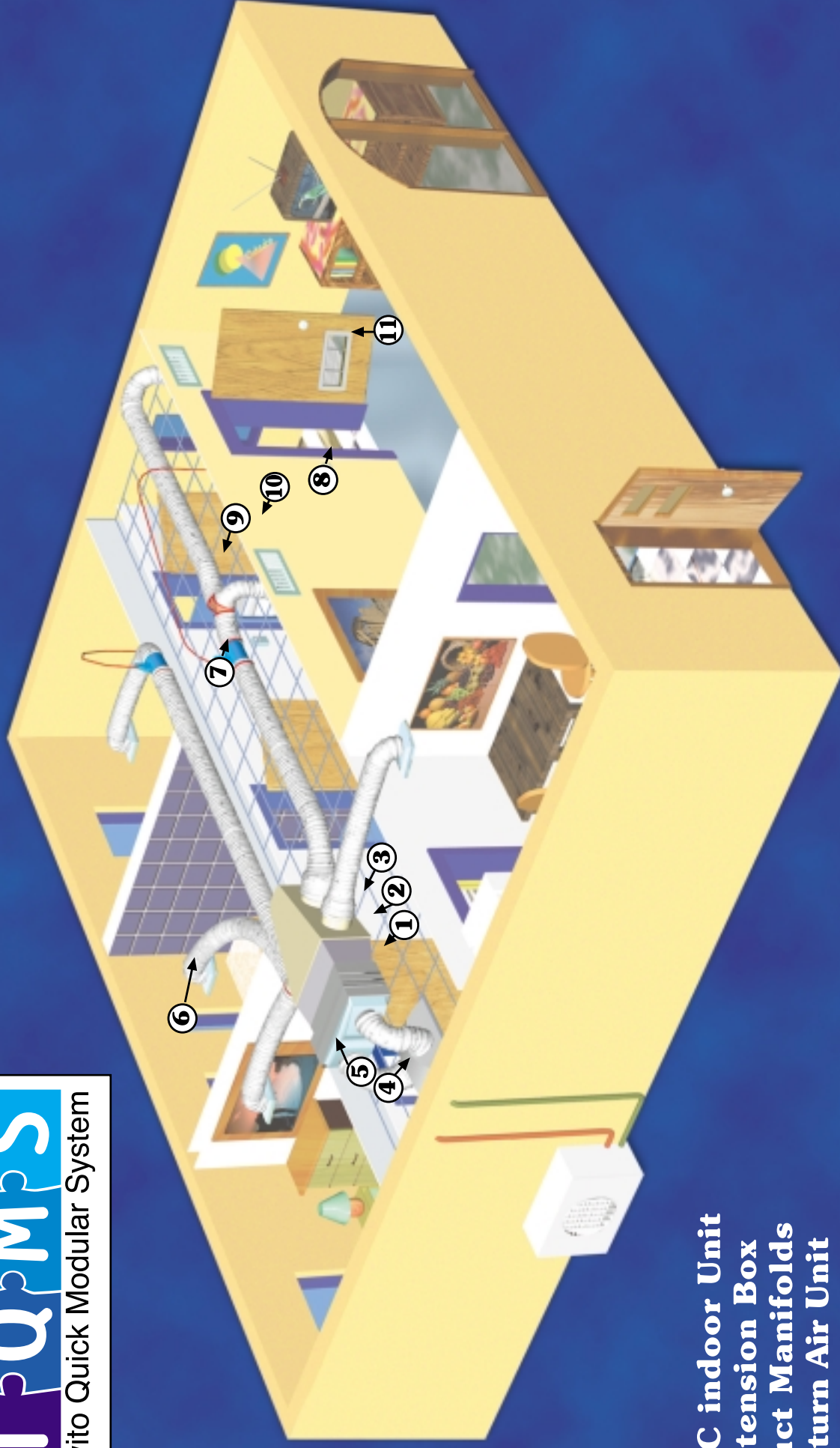


LONG LIFE PLASTIC AIR CONDITIONING ACCESSORIES

- Established in 1989
- 120 employees
- 13 injection-molding machines
- vacuum machines
- Assembly department
- R & D department
- In house designed moulds department
- Owns about 300 moulds.

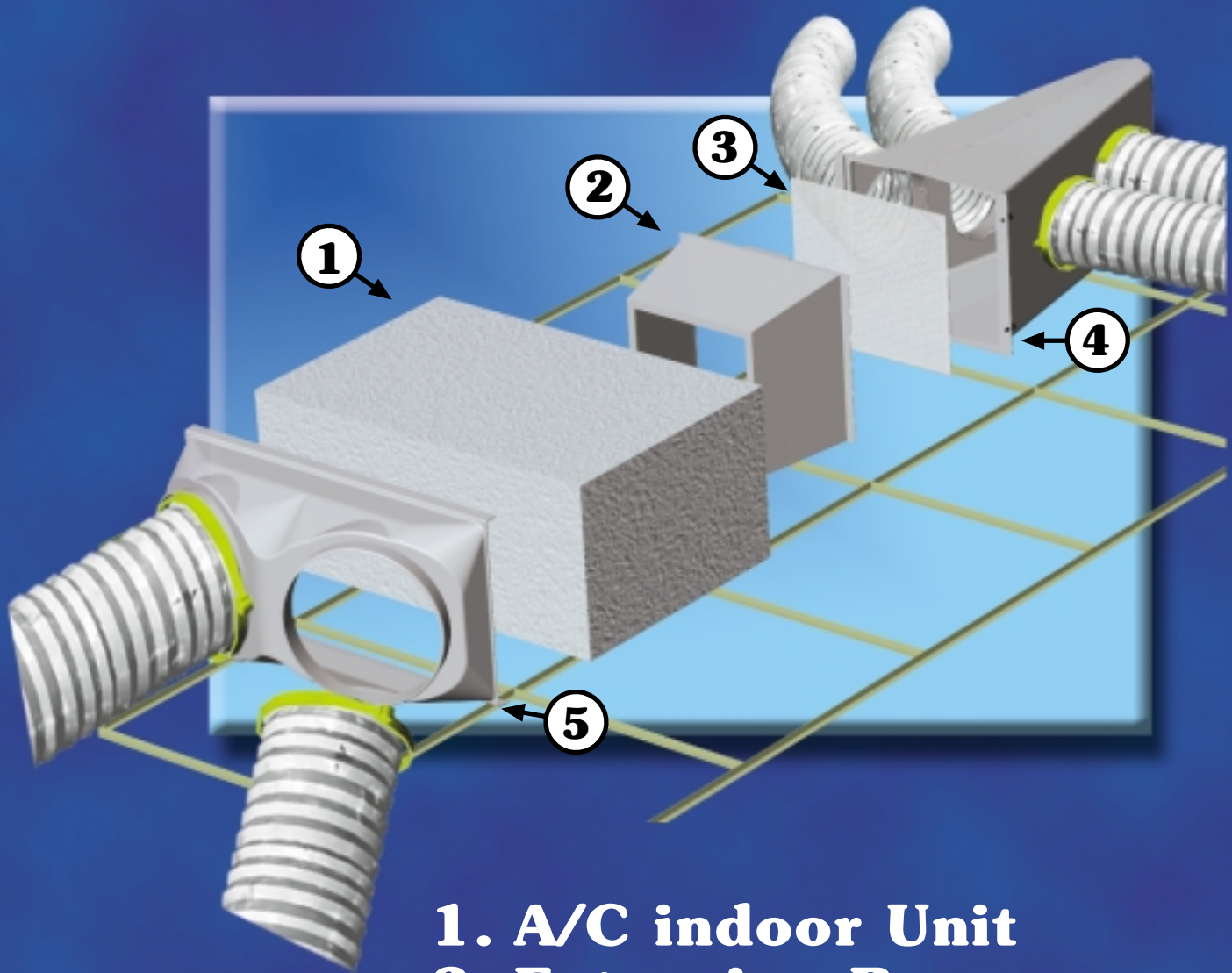






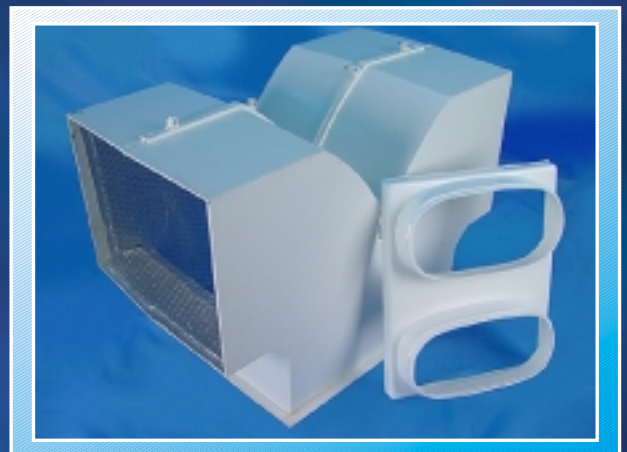
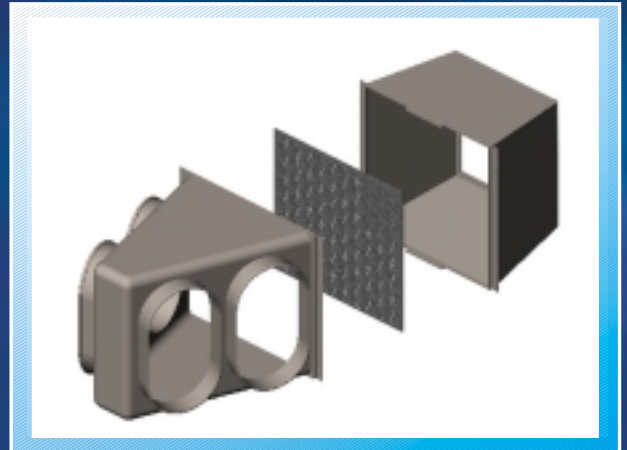
1. A/C indoor Unit
2. Extension Box
3. Duct Manifolds
4. Return Air Unit
5. A/C Unit Return Air Adaptor
6. Ceiling Diffuser
7. Proportional Damper
8. Opal Thermostatic Control Unit
9. Three Way Y-Elbow
10. Supply Grill
11. Return Air Grill for a Door

Duct Manifolds & Return air Adaptor



- 1. A/C indoor Unit**
- 2. Extension Box**
- 3. Flowing Equalizer**
- 4. Duct Manifolds**
- 5. Return Air Adaptor**

DUCT MANIFOLD

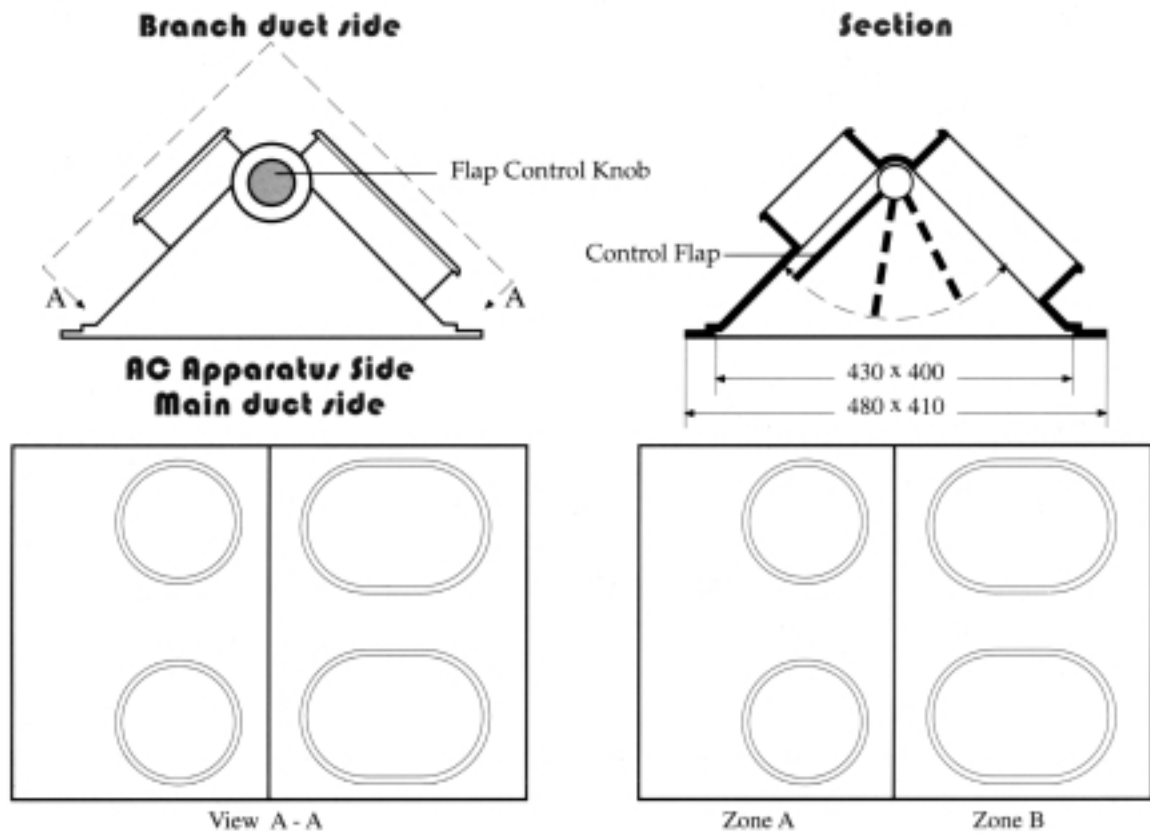


- 3 different types.
- Without air flow control flap.
- With manually operated deflection flap.
- Duct manifold good for air conditioning up to 1100 cfm and 1800 cfm.
- T duct manifold.

DUCT MANIFOLD



- Made of P.S
- Corrosion - resistant.
- Temp. range of 0°C-65°C.
- Serves the air conditioning system distribution box.
- Each side can contain 1 to 4 connections of various sizes.
- Lined with foil alu. insulation sheets.
- Main duct connection is rectangular opening of 400mm x 400mm.
- Duct connection from 6" up to 14".

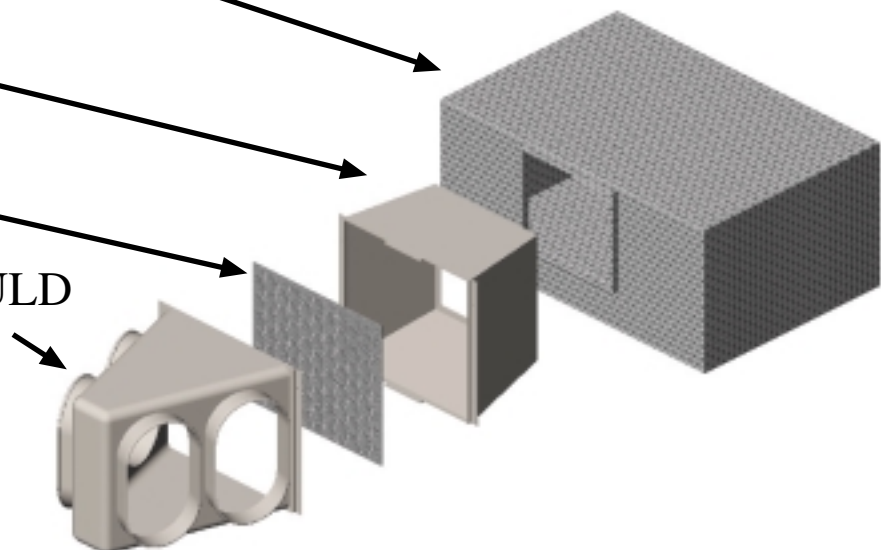


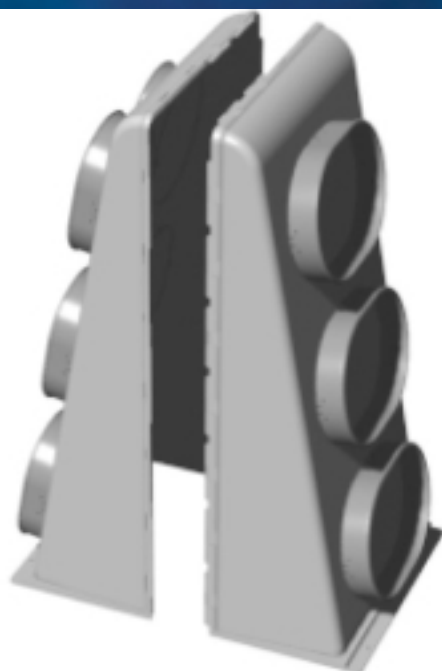
AIR CONDION UNIT

EXTENTION

SCREEN

DUCT MANIFULD





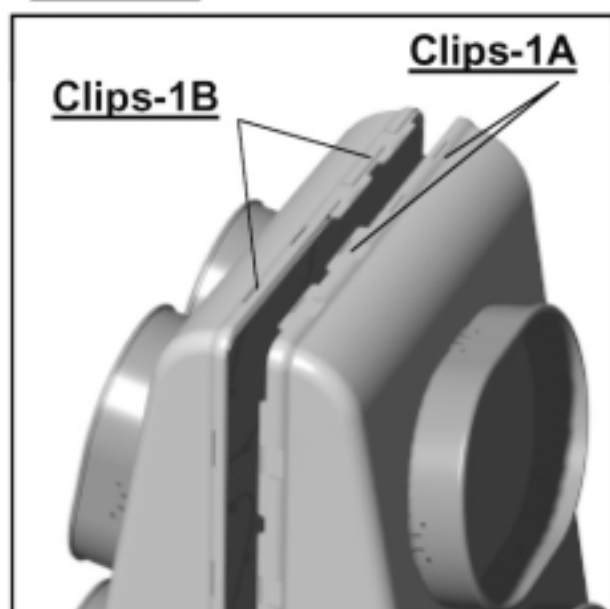
ASSEMBLING INSTRUCTIONS

Duct Manifold

1. Place both parts of the duct manifold on the floor with the wide opening facing down.
2. Position both parts so that **clips-1A & 1B** (located on the perimeter wall) are aligned (see **Detail-1**).
3. Press both parts and press **carefully** together.
4. Patch the inner side of the duct manifold, around the connections with the tape supplied.
5. Open the required air outlet using a knife.
6. Connect the duct manifold to the A/C unit.

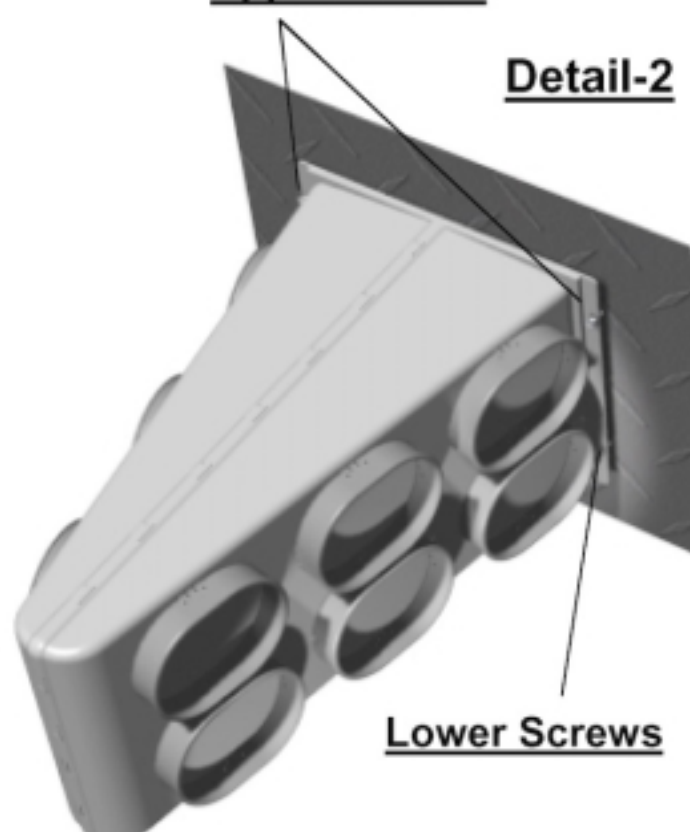
Note: It is best to connect the **upper screws** before connecting the **lower screws** (see **Detail-2**).

Detail-1

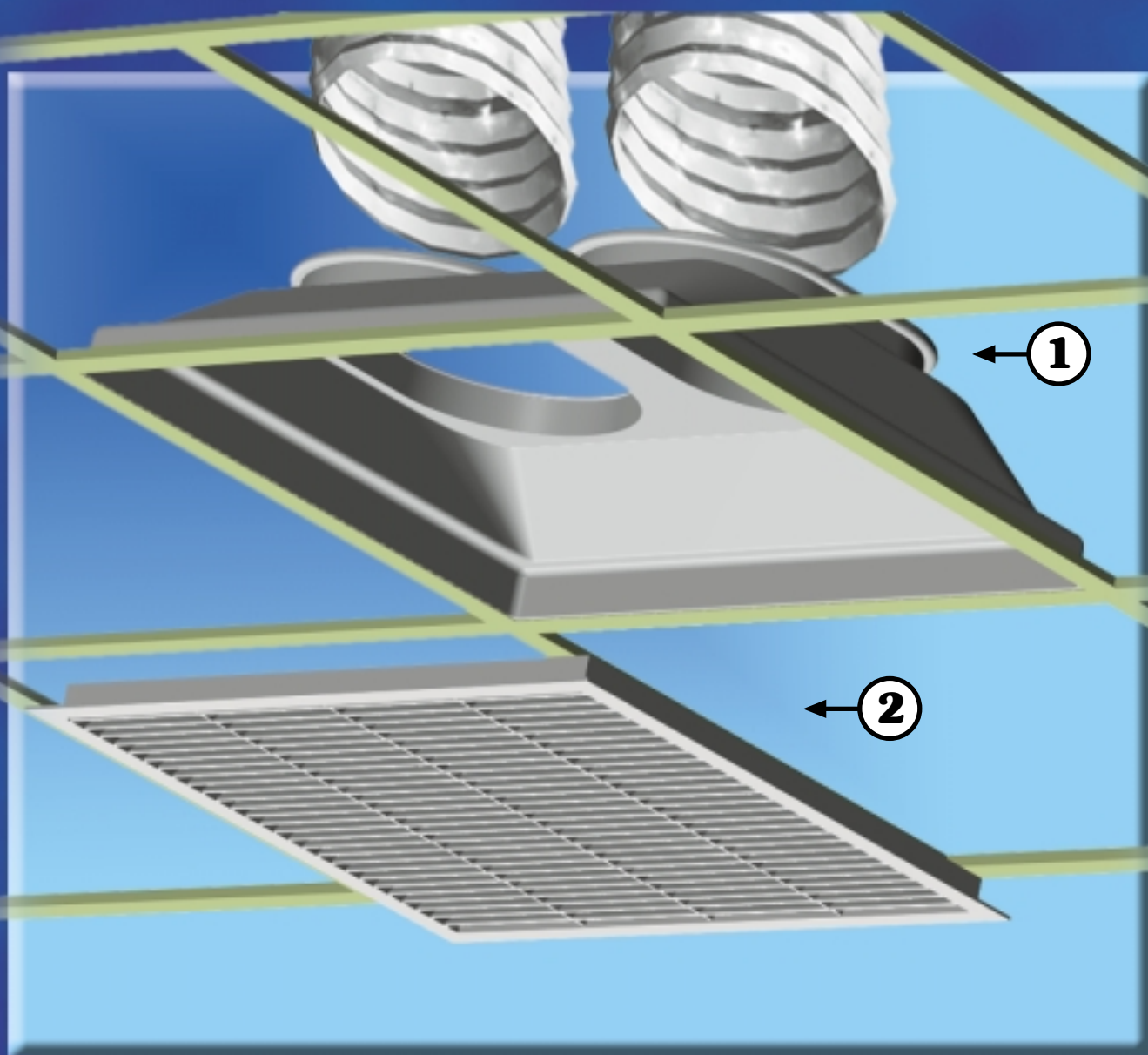


Upper Screws

Detail-2

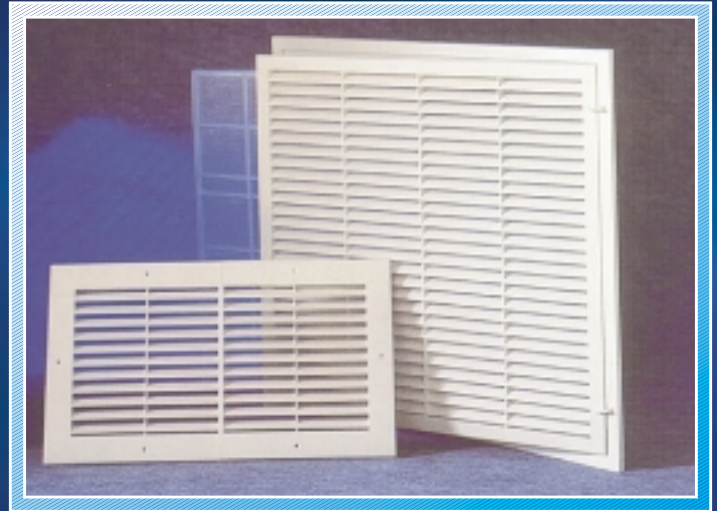


Return Air Grille



- 1. Adaptor
- 2. Grille

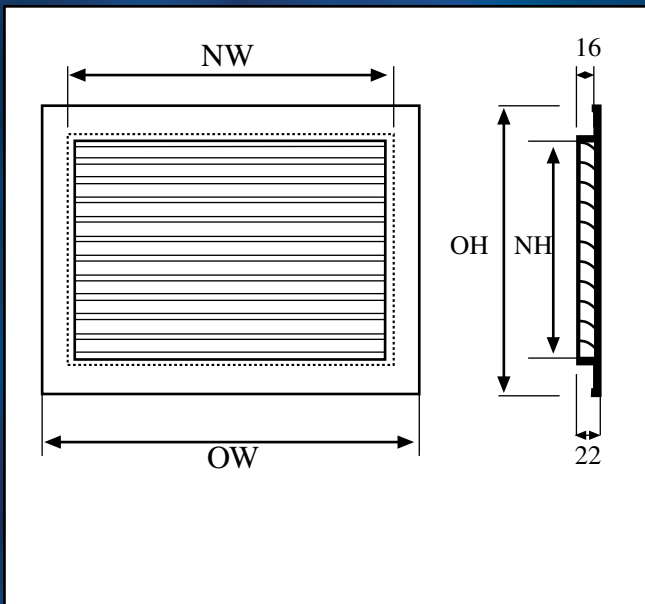
RETURN AIR GRILLE



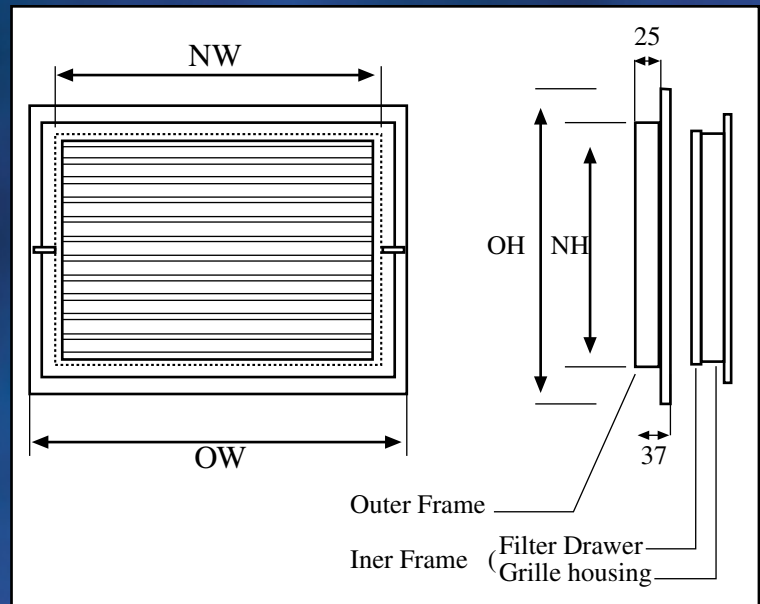
- Made of A.B.S
- Corrosion - resistant.
- Temp. range of 0°C-65°C.
- 4 Series 220mm, 400mm, 525mm, 600mm and special size.
- With or with out filters.
- Prevents condensation.
- Mounted on the wall or ceiling.
- One piece molded unit
- Curved blades 19mm spacing 30° down deflection.
- Frames 20 mm 30 mm.
- Wide frame 40mm.

RETURN AIR GRILLE

Grille without filter



Grille with filter



- OW-overall width
- NW-neck width
- OH-overall height
- NH-neck height



Return Air Grill for a Door

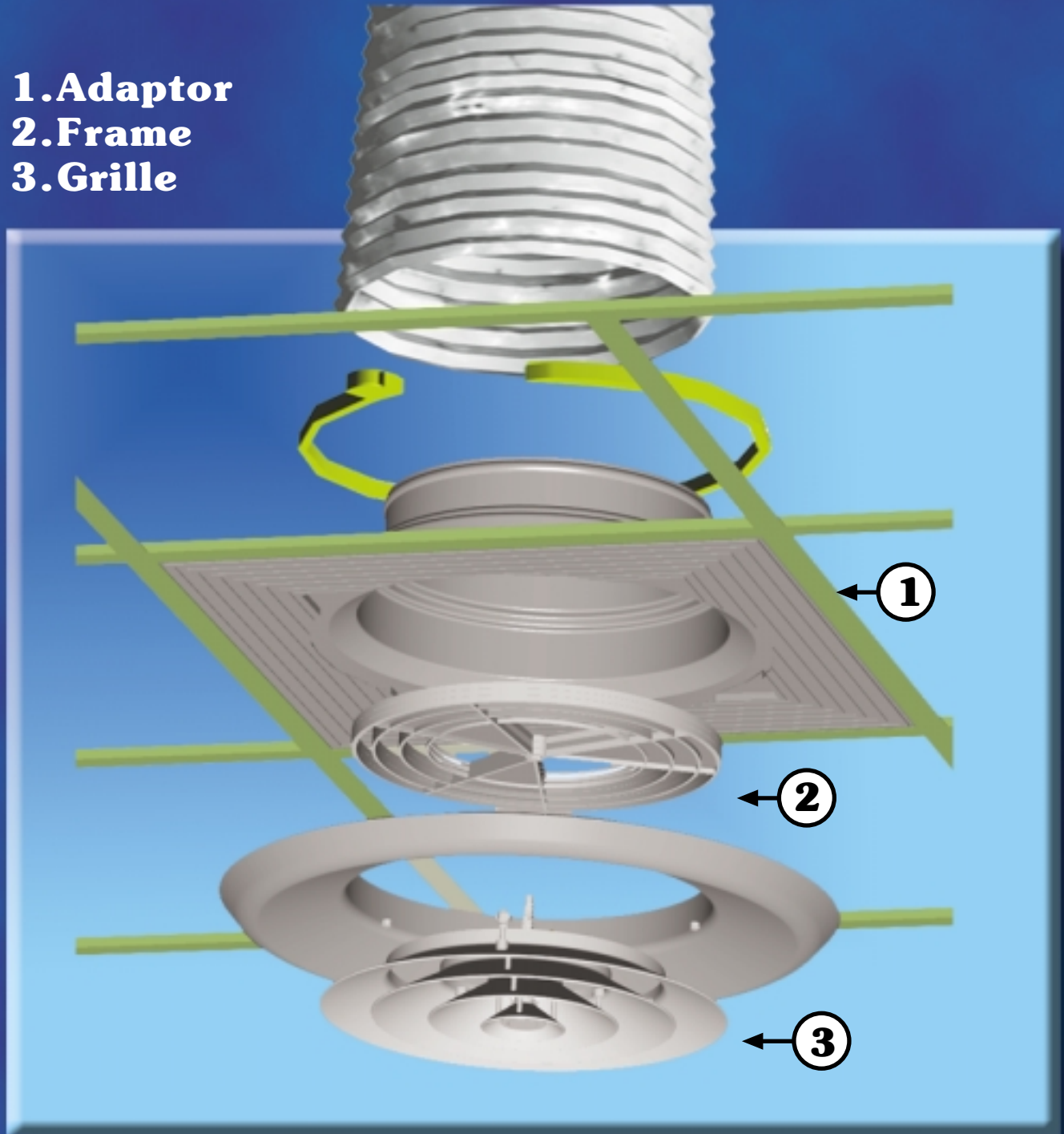


T-Q-M-S

Twito Quick Modular System

Round Ceiling Diffuser

- 1. Adaptor
- 2. Frame
- 3. Grille

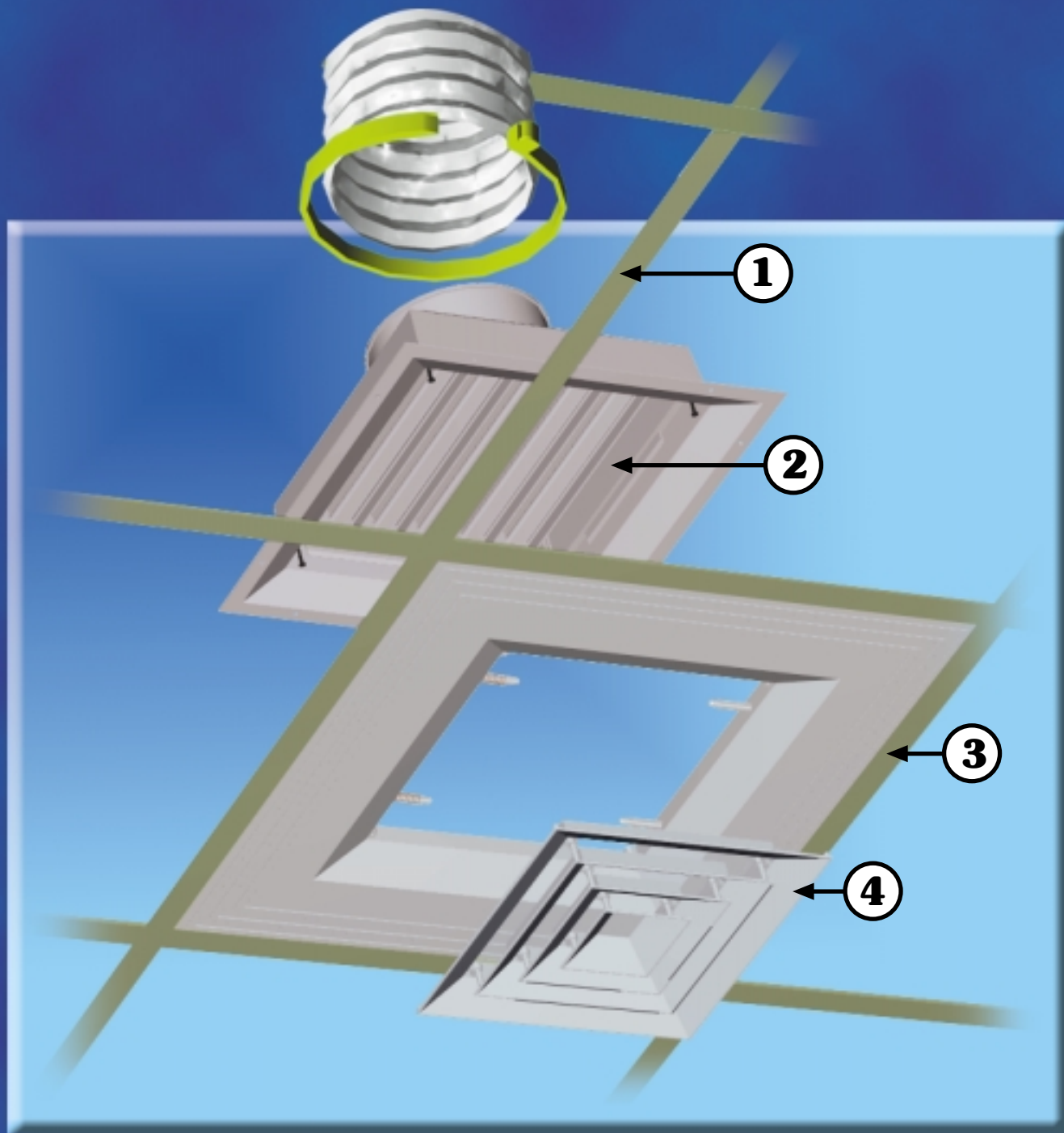


Twitoplast Ltd.
Grilles & Accessories for Air Conditioning

T-Q-M-S

Twito Quick Modular System

Squar Ceiling Diffuser



1. Adaptor

2. Opposed Blade damper

3. Frame

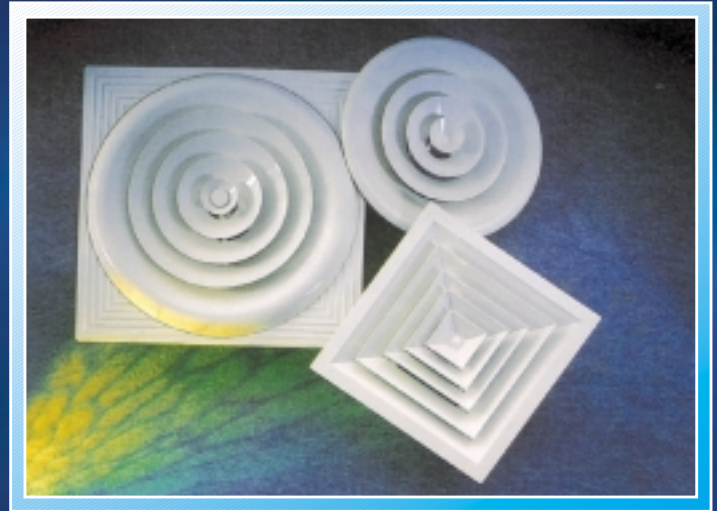
4. Grille



Twitoplast Ltd.

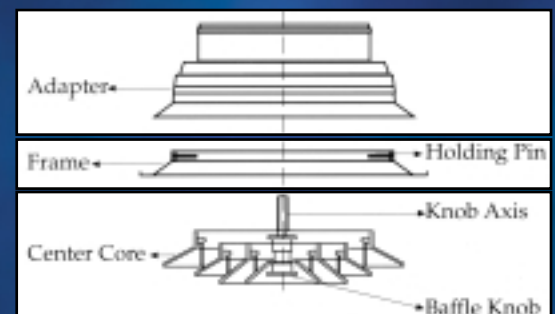
Grilles & Accessories for Air Conditioning

CEILING DIFFUSER SUPPLY GRILLE



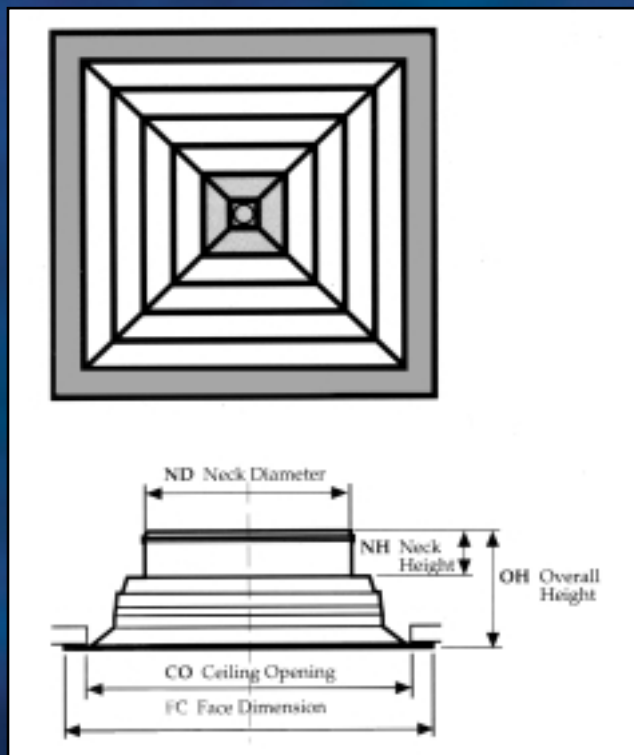
- Made of A.B.S.
- Corrosion - resistant.
- Temp. range of 0°C-65°C.
- Consists 3 sections:

- ◆ Adapter
- ◆ Frame
- ◆ Center core

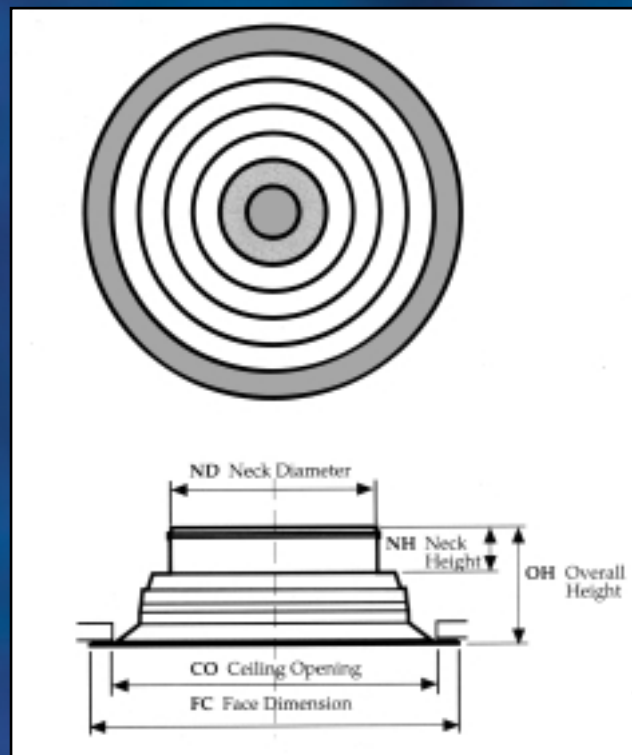


- Distributes uniform air
- Outflowing air jet mixed rapidly with room air.
- Baffle knob manually operated.

Square Diffuser



Round Diffuser

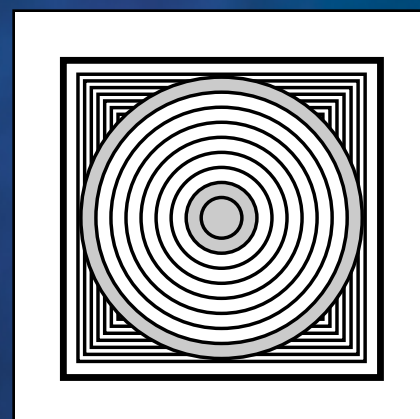
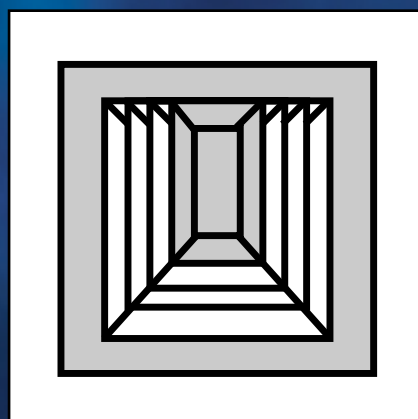
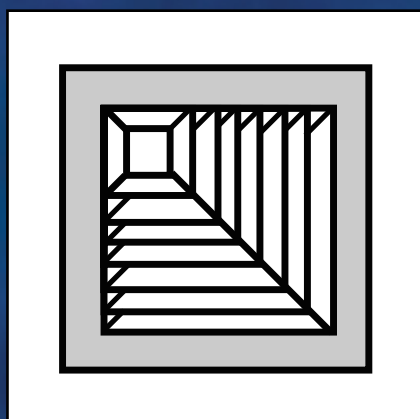


Option

2 WAY

3 WAY

Ard



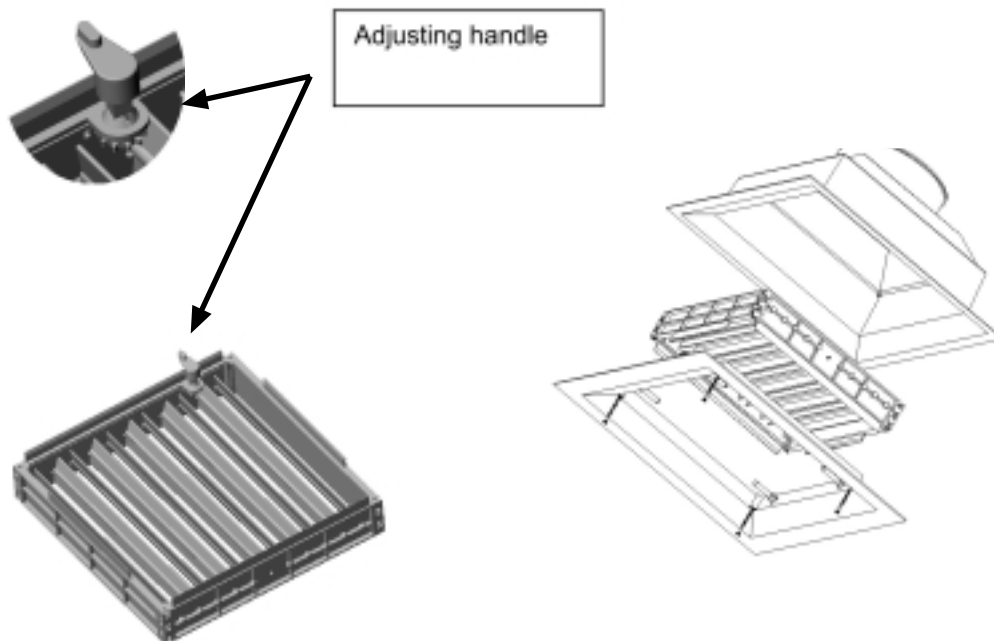
Opposed blade for a ceiling Diffuser

1. New line of opposed blades registers specially designed for ceiling diffuser.

This line is equipped with adjusting handle that enables the user to control the air volume.

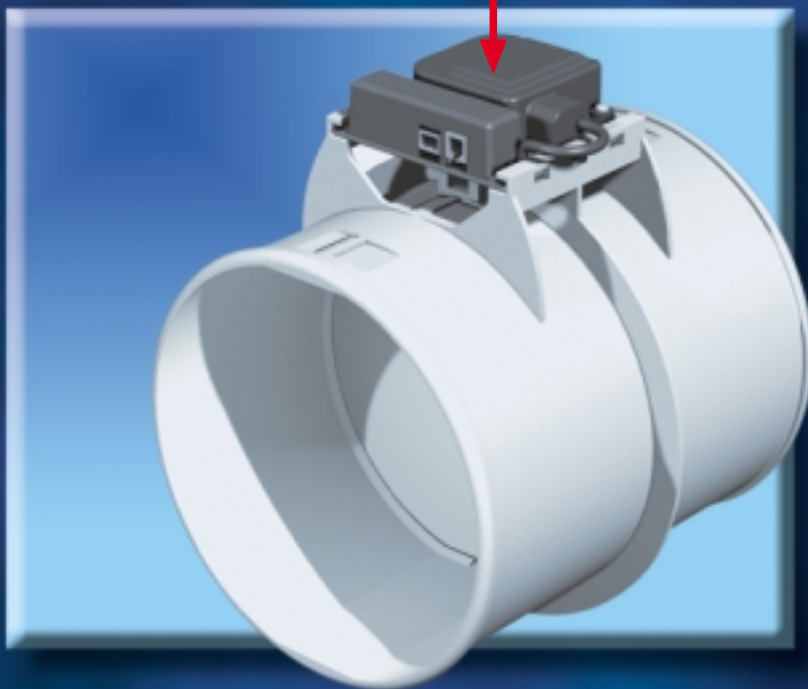
The line is uses a special adapter.

Available sizes: 225X225, 330X330, 385X385 mm.



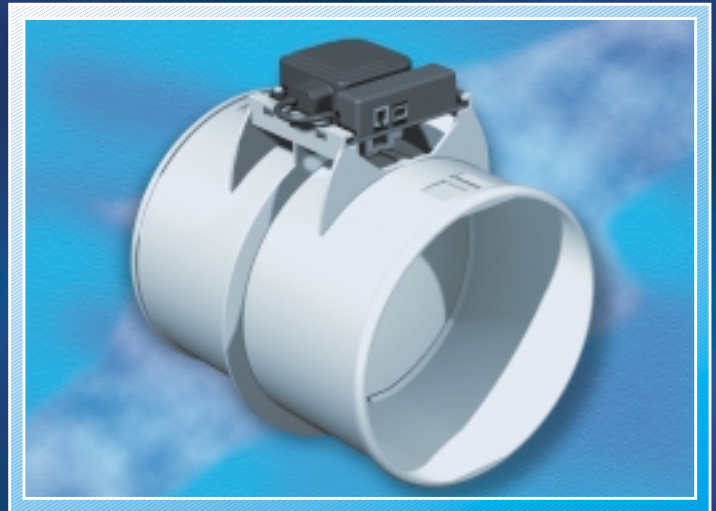
Thermostatic Damper

Opal C128DD



**Proportional
Damper**

Dampers



- Made of A.B.S.
- Corrosion - resistant.
- Temp. range of 0°C-65°C.
- Control air supply to the individual user.
- Flap type adjustment of 90° fully open to close.
- Control methodes
 - ◆ Mechanical-terning knob + 2 m brake cable
 - ◆ Electrical-dimmer controler (OPAL EL).
 - ◆ Electrical thermostatic temp. Control (OPAL C-128DD).
 - ◆ OpalRC10 remote control

Dampers and control units

1. Mechanical Operation



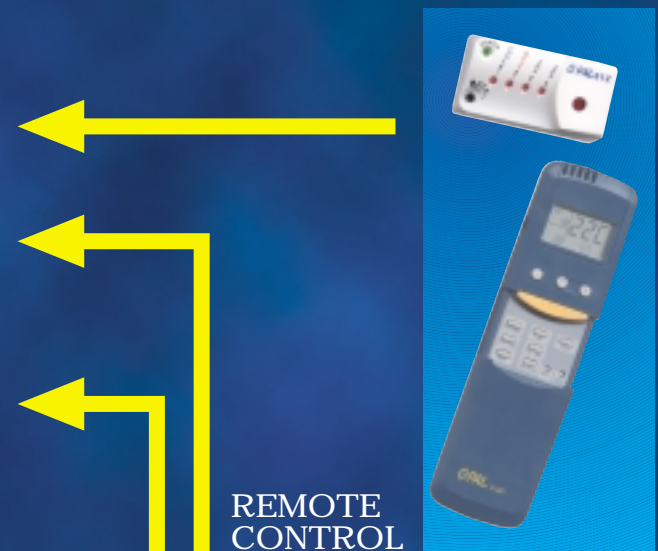
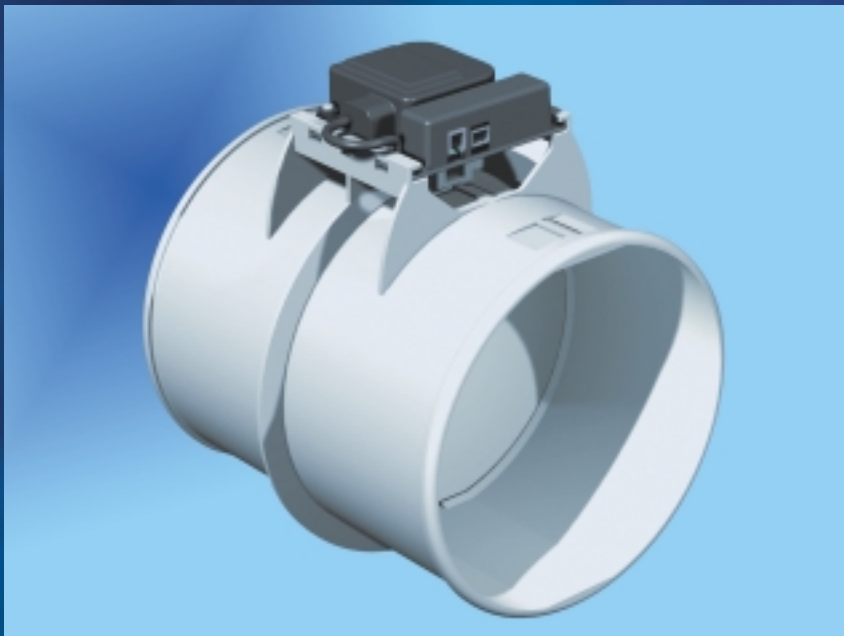
BOX
MOUNT



WALL
MOUNT



2. Motorized Damper

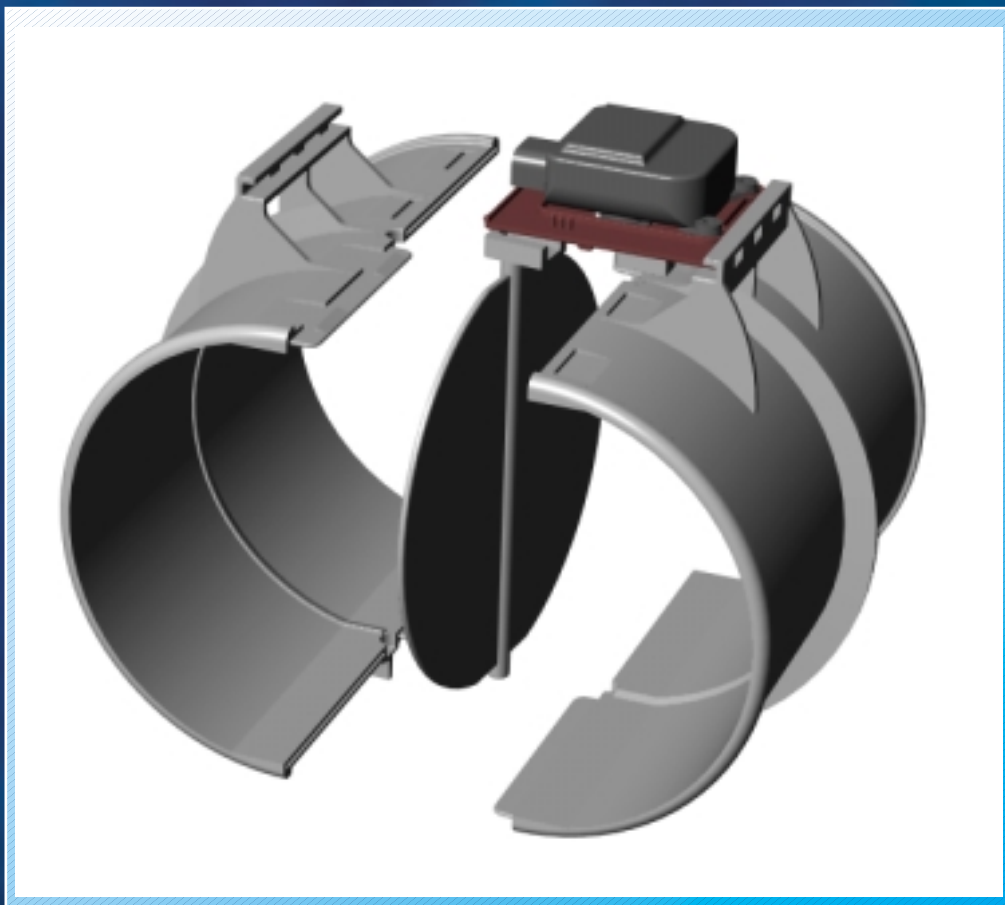
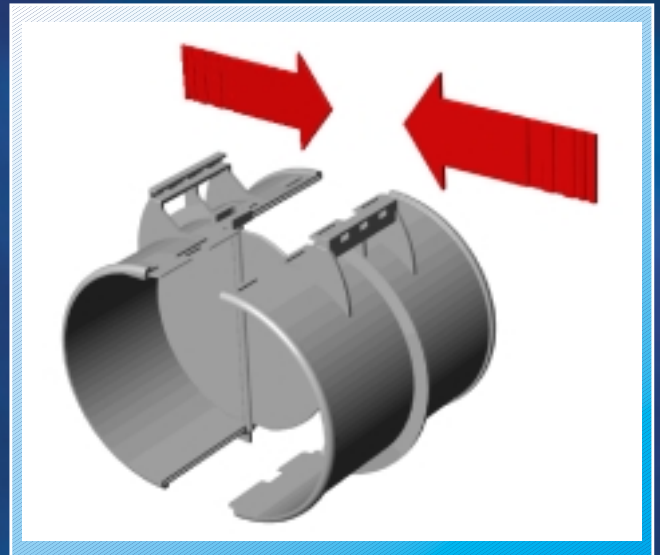


THERMOSTAIC
CONTROL



ELECTRIC
CONTROL

Modular Dampers Assembling



OPAL C128 DD



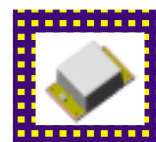
- Ergonomic & easy to operate.
- Room Thermostat.
- Modern design
- Can be instolled as an Independent unit in any existing A/C system.
- Heating/Cooling Selector
- Automatic/manual Operation Selector



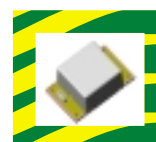
Power supply " C- 315 " 1 channel
 (for one Damper) . Code 1400315



Power supply " C- 315 " 2 channel
 (for 2 Damper) . Code 14003152



Power supply " C- 315 " 4 channel
 (for 4 Damper) . Code 14003154



Complete 1
 channel

Basic Kit

+



Complete 2
 channel

Basic Kit

+

Basic Kit

+



Complete 4
 channel

Basic Kit

+

Basic Kit

+

Basic Kit

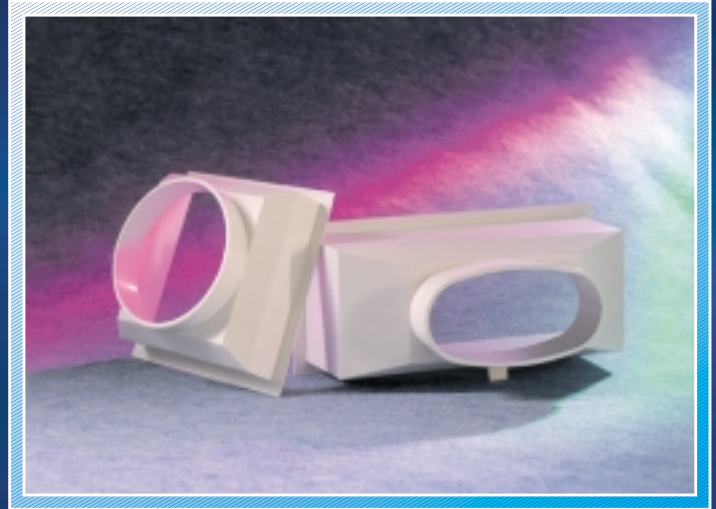
+

Basic Kit

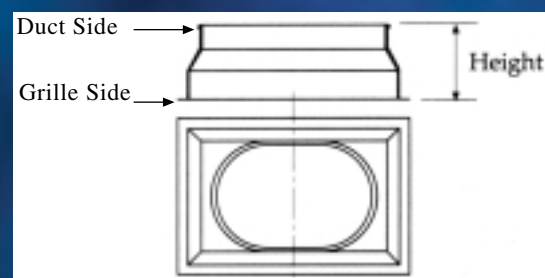
+



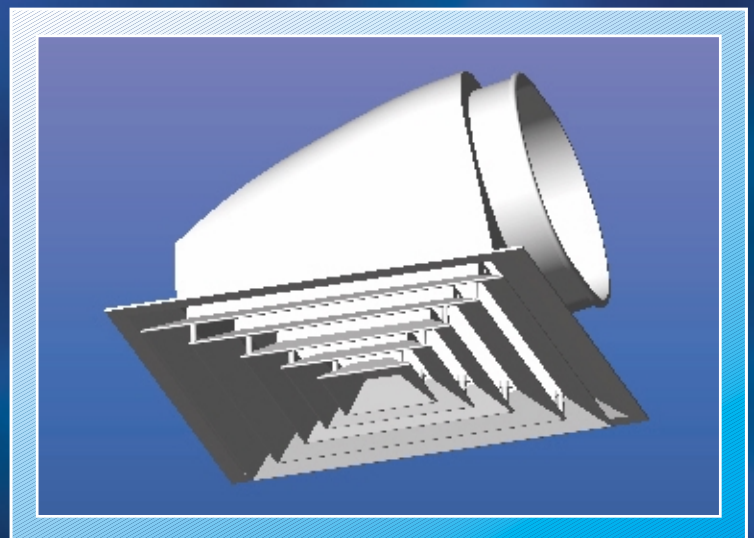
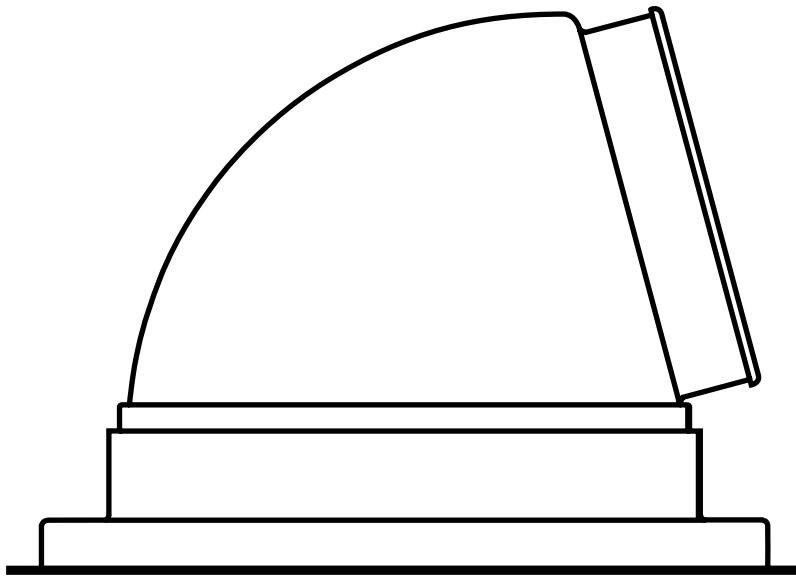
Adapter



- Ergonomic & easy to operate.
- Room Thermostat.
- Modern design
- Prevents condensation
- Connects between flexible ducts and grilles or diffusers.
- Dimensions of the adaptor match the
- Twitoplast grilles & diffusers size.
- 1200 standard adapters max. 600 mm height.

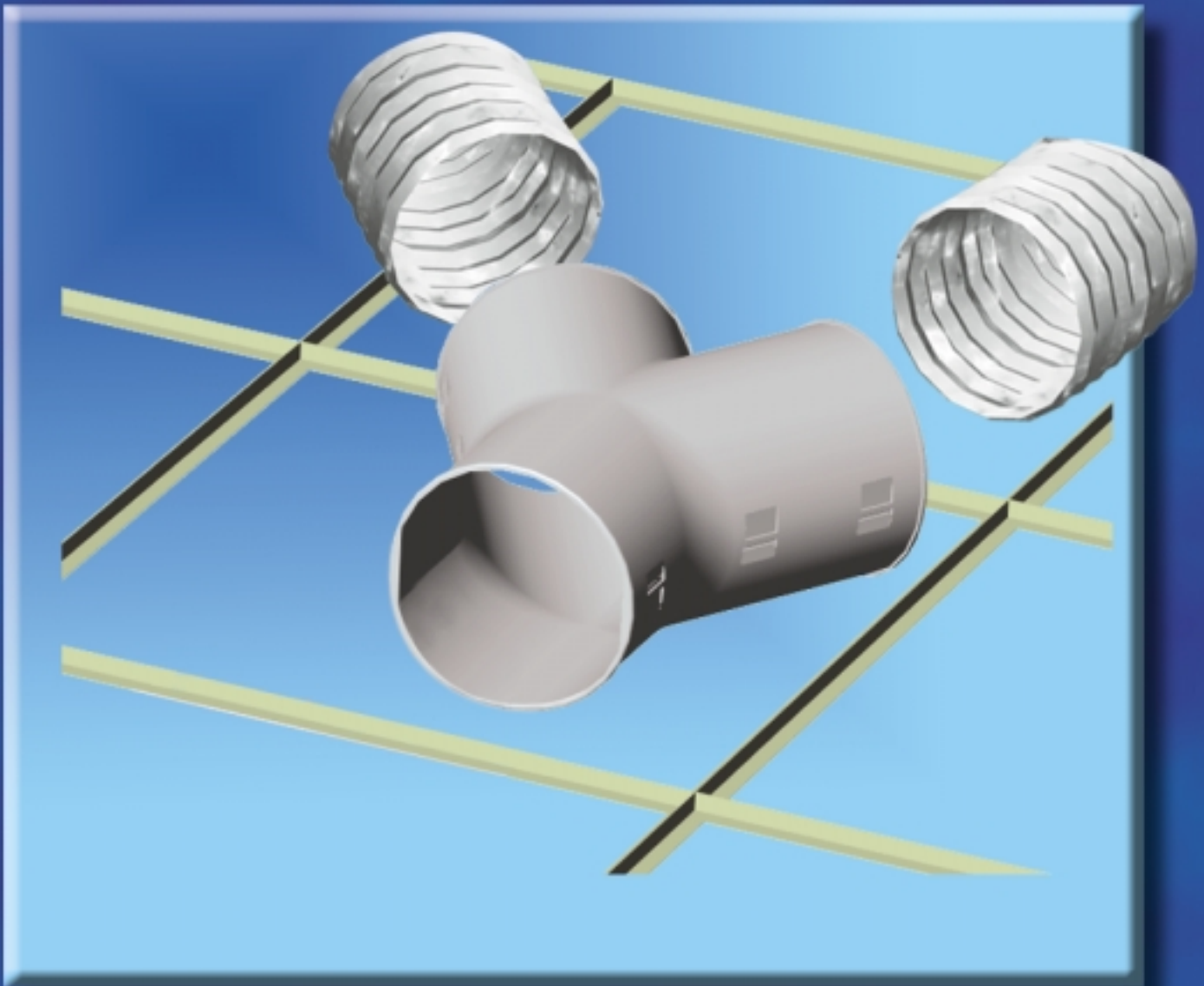


90° Adapter



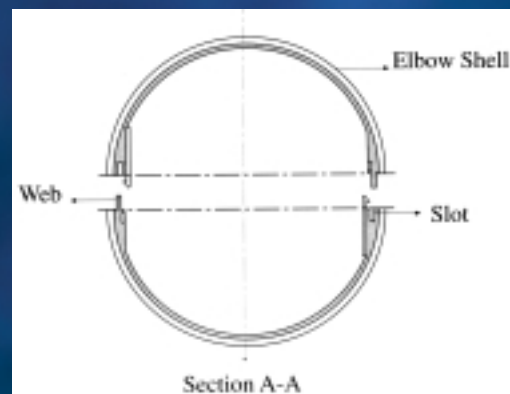
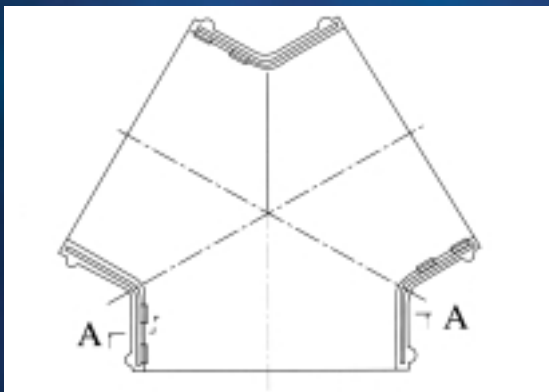
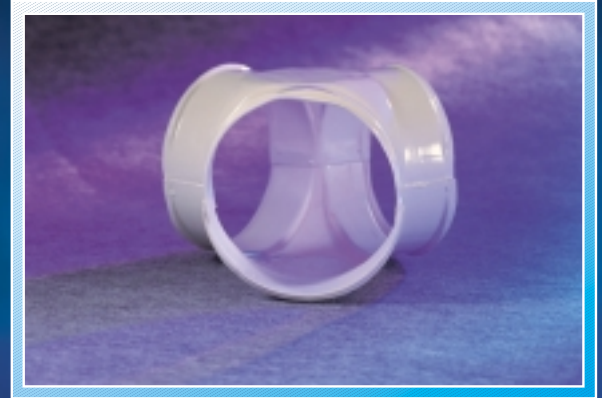


Three Way Y-Elbow

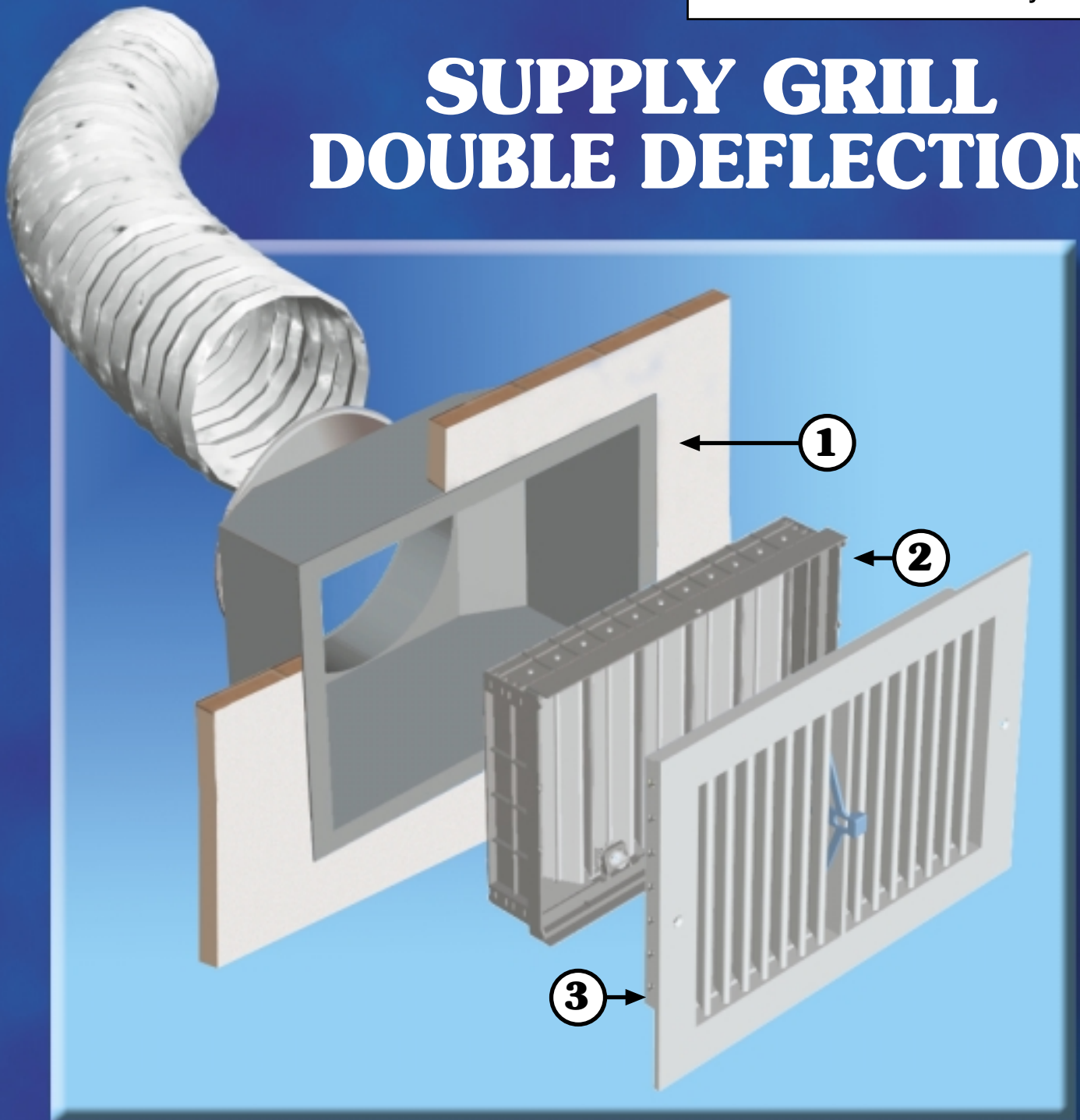


Doabel Deflection Supply Grille

- Made of A.B.S.
- Corrosion - resistant.
- Temp. range of 0°C-65°C.
- Convenient simple connector for branches take of flexible ducts.
- Equal angles of 120° between the branches.
- Equal pressure drop.
- Simple assemble.
- Ducts sizes from 6" up to 14".

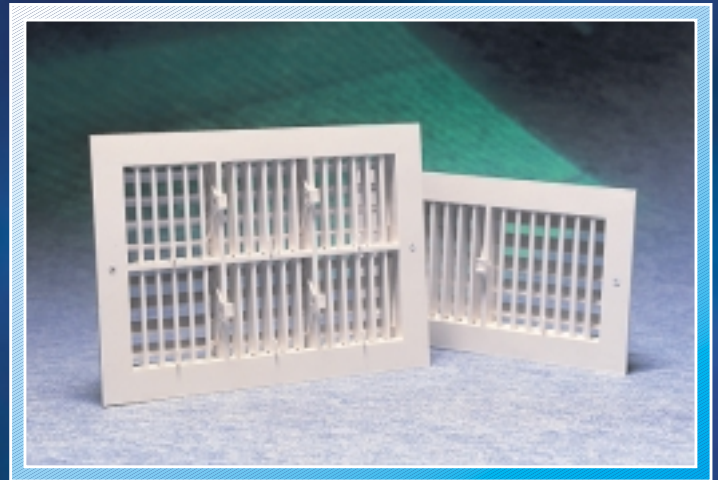


SUPPLY GRILL DOUBLE DEFLECTION



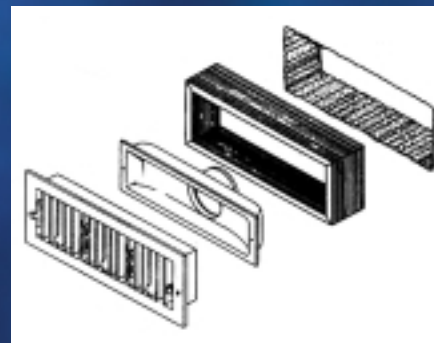
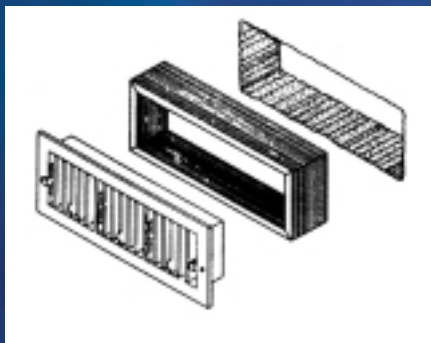
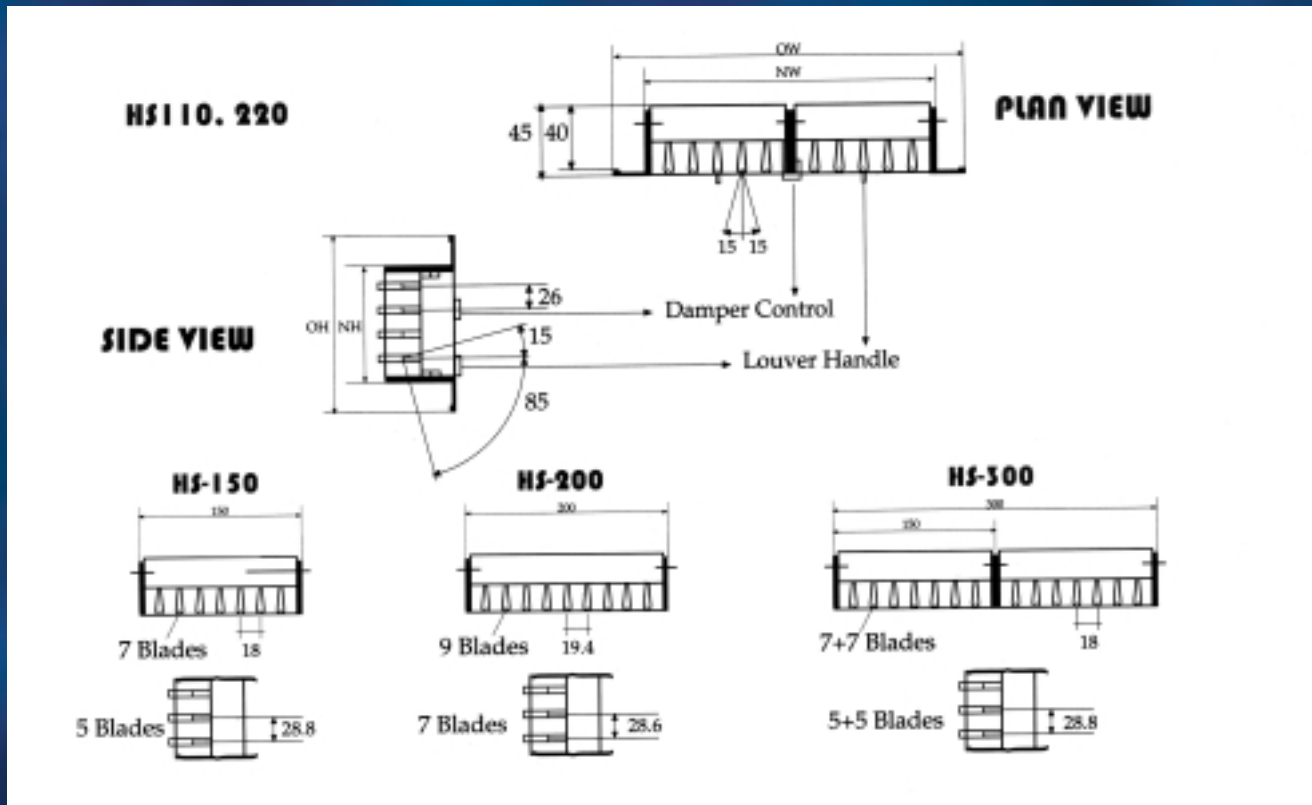
- 1. Adaptor
- 2. Opposed
Blade damper
- 3. Grille

Doabel Deflection Supply Grille



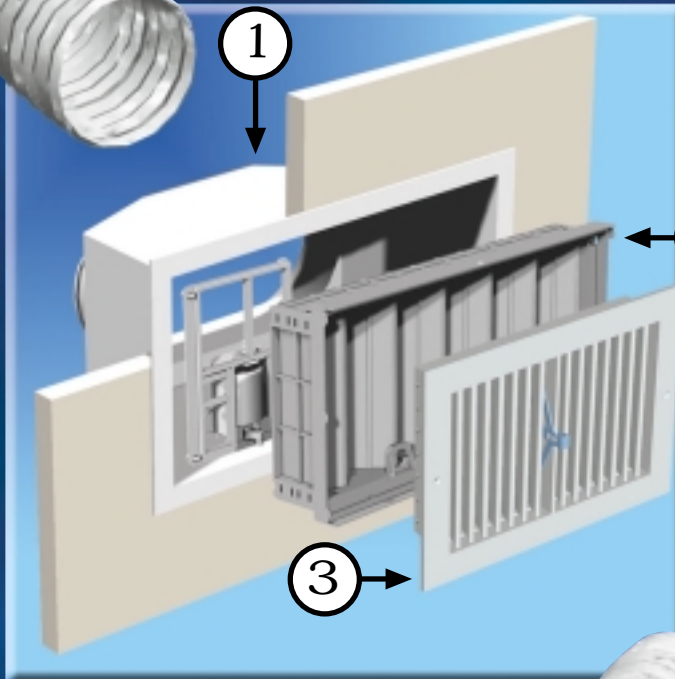
- Made of A.B.S.
- Corrosion - resistant.
- Glossy colors
- Temp. range of 0°C-65°C.
- Size 110x990 mm 150x900 mm
200x900 mm 220x880 mm & more.
- Each segment consists a row of
adjustable louver blades in the front and
in the back.
- Elastomer foam installation tape
preventing air leakage.

Typical segment



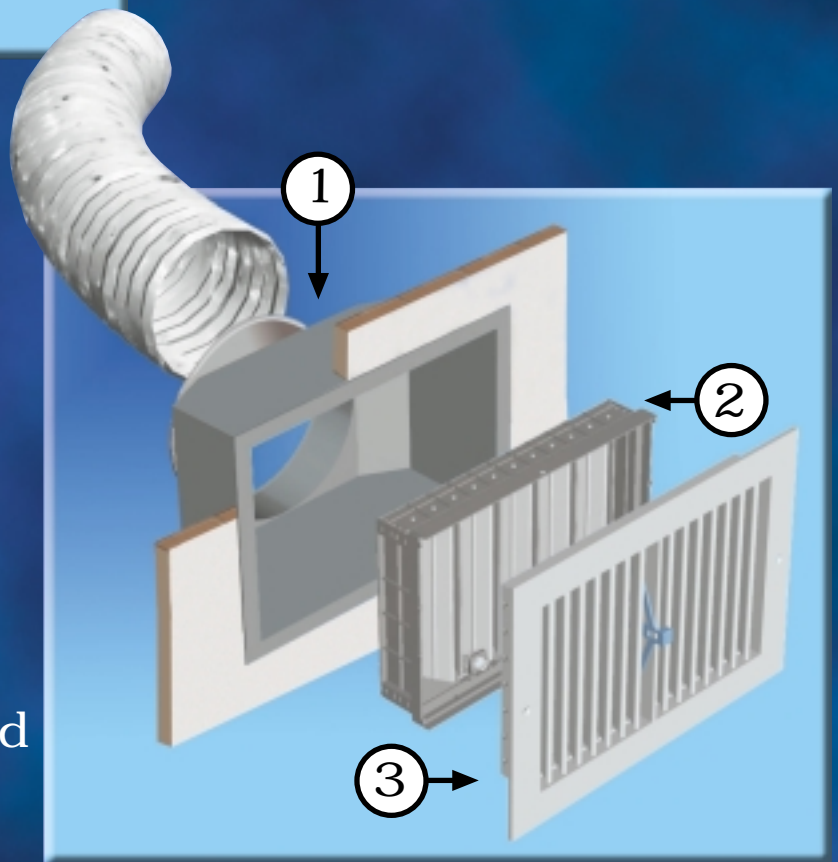
- Mounted directly to the wall.
- Connected to a flexible duct by an adaptor.

Opposed Blade damper



OPAL M.O.B

- 1. Adaptor
- 2. Manual Opposed Blade damper
- 3. Supply Grille



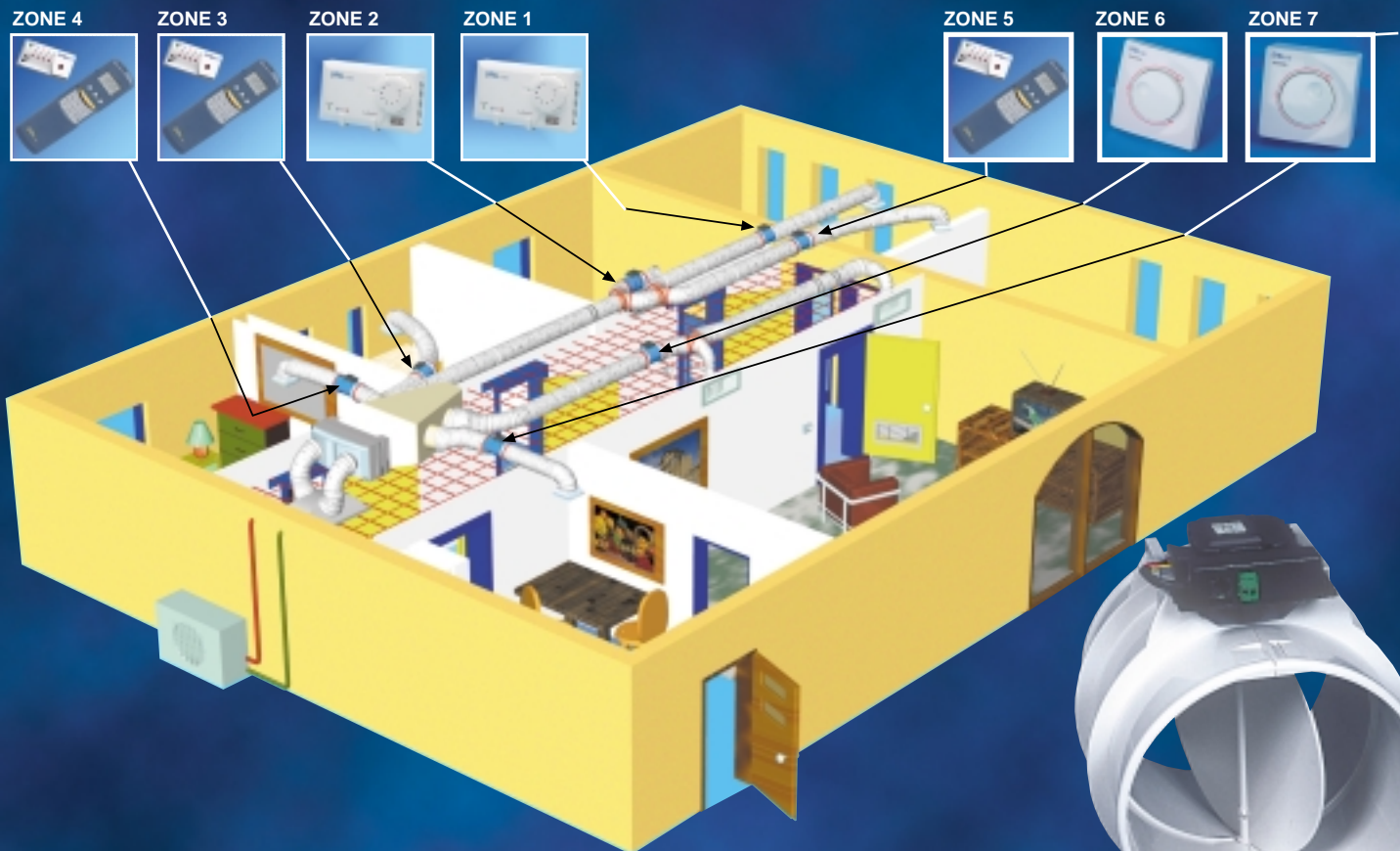
- 1. Adaptor
- 2. Motorized Opposed Blade damper
- 3. Supply Grille

Comparison between plastic & Alominum

Plastic	Alominum
Corrosion resistance	Corrosion
Anti static	Accumulation
Replasive to dust	and dirt
Light weight	Heavier
Does not sweat	Sweating
No dripping	Dripping
Easy to clean	Hard to clean
Colored raw material	Out side painting easy screeching and rubbing
Chemicals resistance	Does not stand Against Chemicals
Perfect look	Imperfect look



Zone control system OPAL ZC107



- Up to 7 modulating rooms (zones) control system.
- 3 types of operations :
 - Thermostat OPAL C128DD.
 - Remote control OPAL RC10.
 - OPAL EL electrical controller.
- Up to 2 compressors.
- Modern design.
- Quick and easy installation.
- 4 daily programs 7 days a week.
- Quick connectors.
- 12" damper for BY-PASS.



Damper



CONTROL BOX C139

CONTROL PANEL C206

**THANK YOU
FOR
YOUR
ATTENTION**